

# IMPORTANT KEEP FOR FUTURE REFERENCE



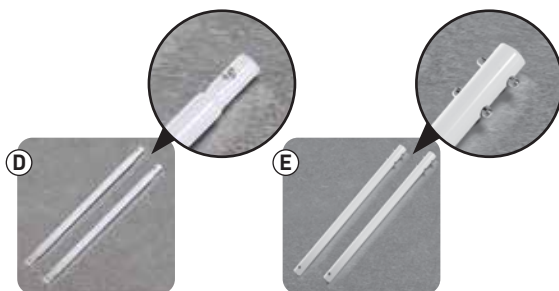
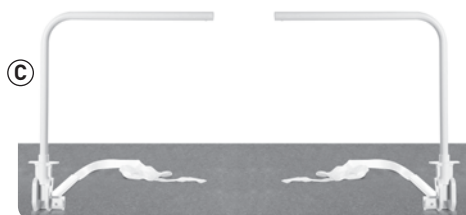
## WARNING

- Not suitable for children under 18 months or over 5 years.
- Use only with children able to climb in and out of bed unaided.
- The bed rail should not be used as a substitute for a cot as it cannot provide the same level of safety as a cot.
- Never use without the fixing devices firmly attached to the bed and mattress.
- This bedguard should not be used on a sleeping surface that is more than 60cm from the floor.
- When the bed rail is fitted well it should touch the side of the mattress.
- When the bed rail is fitted well it should touch the side of the mattress.
- Not suitable for beds with recessed baseboards.
- Use only on Mattress: Width: 76-160cm / 30-63in, Depth: 10-25cm / 4-10in, Length: 160-200cm / 63-78.75in.

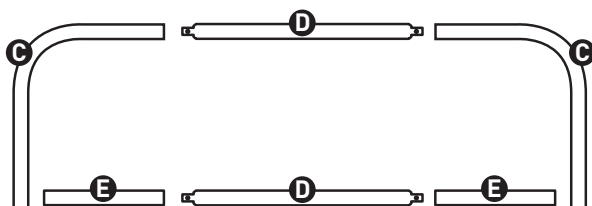
## ASSEMBLY

### PARTS

- A 1 x Storage Bag
- B 1 x Cover
- C 2 x Bedrail Frames (J=Brackets)
- D 2 x Linking Tubes (frame & base)
- E 2 x Base Tubes



### ASSEMBLY SUMMARY



# HOW TO ASSEMBLE



1



2



3



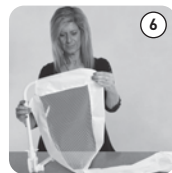
4



5

Open brackets **(J)**

Feed Cover onto Frame **(C)**



6



7



8



9



10

Squeeze buttons in,  
join both Frames **(C)** with 1 x Linking Tube **(D)**



11



12



13

Spread Cover **(B)**  
over Frame **(C)**

Join Base Tubes **(E+D+E)** using  
remaining Linking Tube **(D)**



14

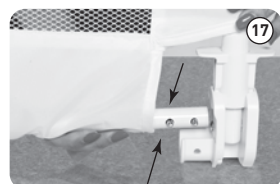


15



16

Feed through bottom of Cover **(B)**



17



18



19

Squeeze buttons **(E)**

Insert securely into Brackets **(J)**



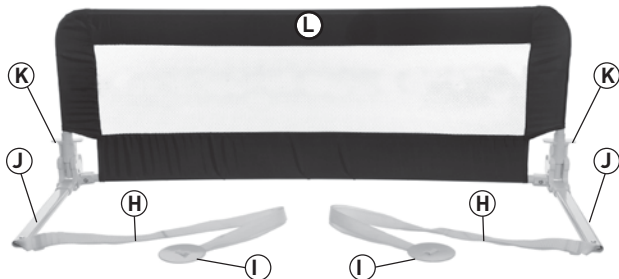
20

To remove cover **(B)** for washing,  
reverse assembly steps.

# INSTALLATION

## PARTS LIST

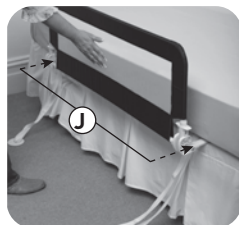
- H Straps
- I Anchors
- J Brackets
- K Tabs
- L Bed rail



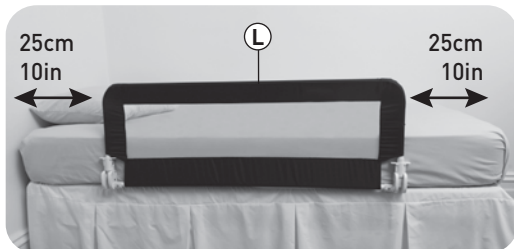
## HOW TO INSTALL



1. Pull down Brackets (J) until they click and lock into position.



2. Slide Brackets (J) under mattress.

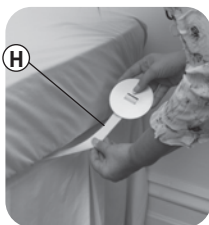
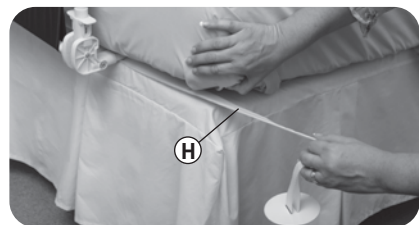


3. Position bed rail (L) so there is a gap of at least 25cm / 10in from both ends of bed.

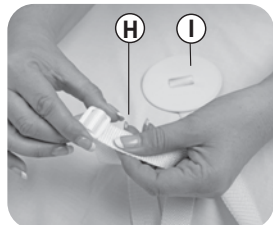


### WARNING:

To prevent the risk of strangulation it is essential to ensure that when the bedrail is fitted into position, there is a gap of at least 25cm / 10in between each end of the bed and the corresponding end of the bedrail.

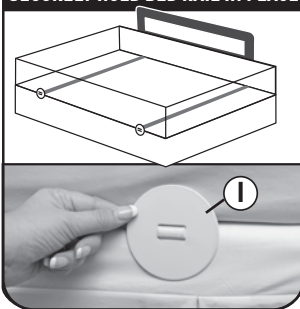


4. Slide Straps (H) under the mattress and out the other side.



5. Tighten Straps (H) so that 2 Anchor plates (I) are tight and flat against the side of the mattress.

### 2 SAFETY ANCHORS SECURELY HOLD BED RAIL IN PLACE



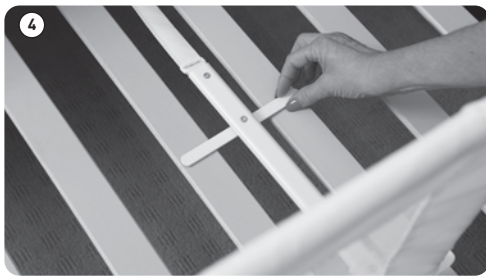
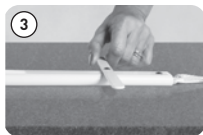
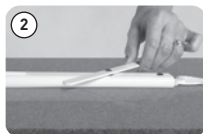
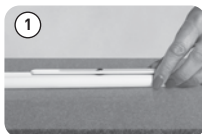
6. Tuck in any excess straps under mattress



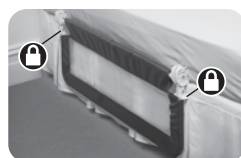
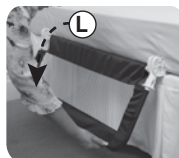
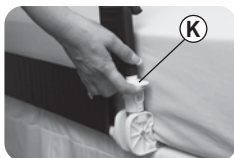
7. Once installed, check the bedrail is properly fitted and secure.

## T-Bar For use with Slat bed bases

Before positioning under mattress, you must rotate T-Bar 90°



## OPERATION



**To open:** To release lock, simultaneously lift both Tabs (K) on bed rail brackets.  
Swing bed rail (L) down. Confirm bed rail is locked when down



**To close:**  
Release Lock, Swing bed rail (L) up against mattress until the 2 tabs (K) click and lock into position.

## CARE & MAINTENANCE

- Regularly check bed rail to ensure it is assembled and fitted properly and securely. Adjust as required.
- Discontinue use if damaged, broken, or if parts missing.
- Any additional and replacement parts should be obtained from Tee-Zed Products.
- To remove cover for washing, reverse assembly steps.
- To wash cover: warm machine wash gentle cycle, air dry.
- caused by installation or removal of the products other than in accordance with the supplied installation and removal instructions; or
- To clean other parts, wipe with damp cloth using mild detergent.

## CONTACT DETAILS

Tee-Zed acknowledges that its customers may be entitled to statutory consumer guarantees and does not seek to exclude or limit them. These guarantees include that Tee-Zed's products are of acceptable quality. This Tee-Zed product is for the specific purpose detailed in the instructions and packaging and Tee-Zed considers use outside of that purpose to be abnormal use. To the maximum extent permitted by law, Tee-Zed does not accept any liability for damage:

- arising from abnormal use of the products;
- caused by installation or removal of the products other than in accordance with the supplied installation and removal instructions; or
- arising under the law of tort or contract.

Dreambaby® products by



Tee-Zed Products Pty Ltd,  
PO Box 2022,  
Bondi Junction NSW 1355  
**Australia**  
☎ +61 (0)2 9386 4000  
✉ info@tee-zed.com.au  
www.dreambaby.com.au

Tee-Zed Products Ltd  
PO Box 29227,  
Dunfermline, KY12 2DN  
**United Kingdom**  
☎ +44 (0)844 800 9445  
✉ info@tee-zed.co.uk  
www.dreambaby.co.uk

Tee-Zed Products (N.Z.) Ltd  
PO Box 64013,  
Botany Town Centre Auckland  
**New Zealand**  
☎ +64 (0)9 274 8788  
✉ info@tee-zed.co.nz  
www.dreambaby.co.nz



**dreambabysafety**

**YouTube**

**dreambabytv**

Made in Xiamen City, China.  
©2018 Tee-Zed Products Pty Ltd

